

2017 Newsletter

Silver Lake Improvement Association

To enhance the water quality, recreational use and natural beauty of Silver Lake - North St. Paul, Maplewood & Oakdale, Minnesota

Issue: 5

[2016 Highlights, P2](#)

[2017 Planning, P6](#)

[Membership Form, P 7](#)



SLIA Web Site:
www.silverlakensp.org

The 2017 SLIA Annual Meeting of the Membership was held on [February 6, 2016 at 7:00 PM](#) at North St. Paul City Hall.

About SLIA:

The **Silver Lake Improvement Association (SLIA)** is a nonprofit organization with the purpose of promoting programs that enhance the water quality, recreational use and natural beauty of Silver Lake in North St. Paul, Maplewood, and Oakdale Minnesota.

The association is governed by its members represented by 7 board members.
Current members are:

President: Mark Kotz
Vice President: Paul Anderson
Secretary: Kristen Rieser
Treasurer: Joyce Germscheid
Membership: Joyce Germscheid
Members At Large: John Muller, Jason Ziemer, Rick Gelbmann



SLIA Board meetings are held on the first Monday of every other month. A meeting of the full membership is held on an annual basis and was held Feb 6th 2017.

2016 Highlights

Thank you 2016 SLIA Members!! (Germscheid)

- We'd like to thank the contributing SLIA Members for their support of Silver Lake! This year we had 26 paying members for a \$650 increase to the account. Five of these were non-lake shore owners!! That's wonderful and we appreciate your interest in the health & vitality of Silver Lake.
- Note: there are 36 total lake shore owners on Silver Lake.
- Membership for 2017 can be found on the last page of this Newsletter. Dues will remain at \$25.

Finance Report for 2016: (Germscheid):

- 2016 DRN Treatment Grant cut-back
- Treated smaller areas of the lake
- Bank balance continues to decline as treatment costs not fully covered by Dues, and DNR Grants will be cut again this year

Description	2016 Amount	2015 Amount
Starting Balance	\$4,676.20	\$7,292.57
Member Contributions	\$650.00	\$575.00
DNR Treatment Grants	\$565.00	\$1,050.00
Treatment Contractor Fee	-\$1,625.00	-\$4,092.50
Expenses (web site)	-\$172.39	-\$148.87
Ending Balance	\$4,093.81	\$4,676.20

Board Election: Voted Mark Kotz and Paul Anderson to the 2 open Board positions. Unopposed. April meeting will have elections for President and Vice President as they are the 2 open positions.

- President: Mark Kotz (ends 2017)
- Vice Pres: Paul Anderson (ends 2017)
- Secretary: Kristen Rieser (ends 2019)
- Treasurer: Joyce Germscheid (ends 2019)
- Member: Rick Gelbmann (ends 2019)
- Member: John Muller (ends 2018)
- Member: Jason Ziemer (ends 2018)

RECAP: (Kotz, Gelbmann, Ziemer)

- Winter**
 - Continue voluntary no wake when water above 989.35 ft
 - Goal: Increase native plants, reduce invasives
- Spring**
 - Milfoil visible near boat launch
 - Board agrees to treat bays and coordinate shoreline treatments for members
- Summer**
 - Bays and shorelines treated
 - Received DNR grant for \$565
 - Treatment appeared to be effective
 - High water no wake in June and August
 - DNR plant survey
 - Water Clarity Sampling

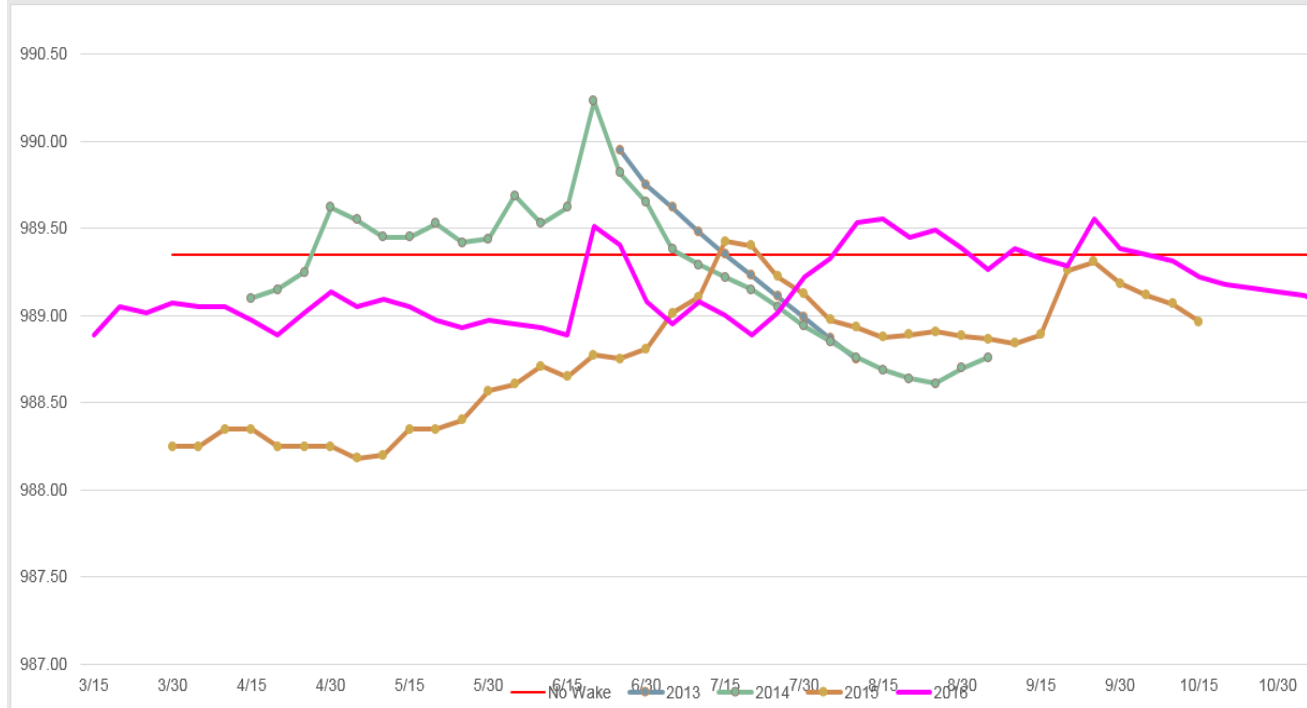
Summer/Fall

- DNR Grant funds reduce to 30% of previous years
- High water and weir issue
- Weir was kept clear of leaves
- Bank balance getting lower

2016 Lake Levels/Clarity/Health/Treatment: (Ziemer/Gelbmann)

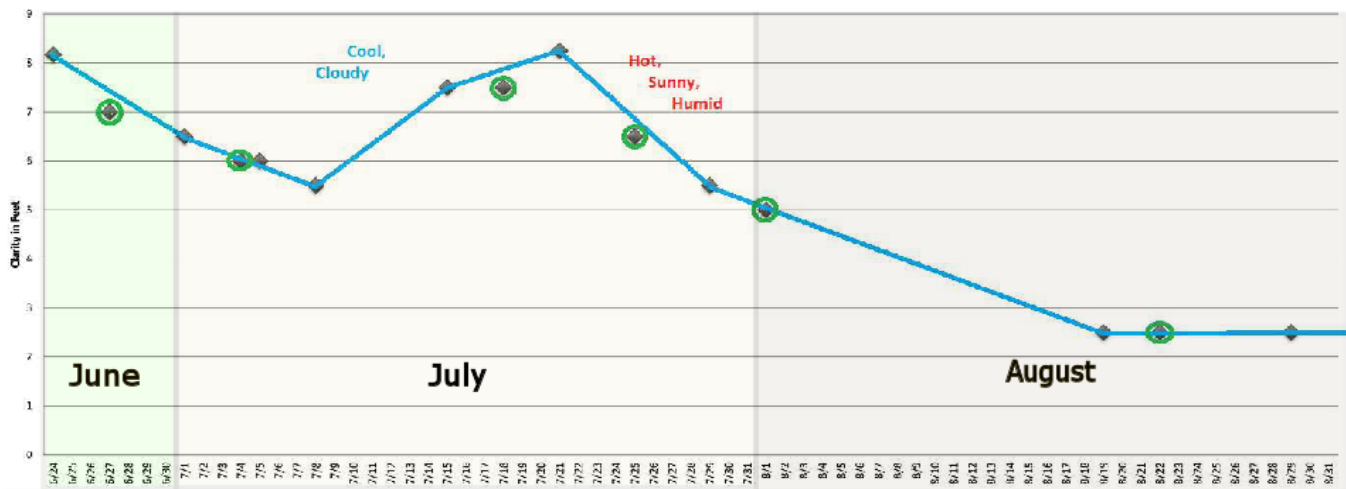
The **RED line** is the no-wake level; 989.35 ft. **Pink line** represents 2016. Three times this year we had to post voluntary no-wake.

Silver Lake Water Level



2016 Lake Clarity:

Clarity is in FEET below surface. Normal peak in July when hot, sunny and humid. More rain in Aug/Sept gave us more clarity.



Historical Water Clarity:

Full lake treatment in 2007, 2008 and 2009 eliminated not only the invasives but also the natives thus causing much lower water clarity with this lack of native plants. Since then the treatment areas have been focused on those in dire need, helping native plants revive. This will be a slow recovery, but we are seeing an increase!

Table 1-Secchi Averages. Average Secchi disk observations in meters for Silver Lake (DOW #62000100). Data gathered from the Minnesota Pollution Control Agency.

YEAR	MAY	JUNE	JULY	AUG	SEPT	Secchi Depth Average [May-Sept]
2006	3.5	3.2	2.5	1.5	2.8	2.7
2007	3.4	2.3	1.1	0.7	1.3	1.8
2008	3.3	2.5	1.7	0.7	0.8	1.8
2009	1.6	1.6	1.4	0.8	0.8	1.2
2010	2.2	1.9	1.2	0.5	0.6	1.3
2011	2.3	1.9	1.2	0.6	0.6	1.3
2012	1.7	2.1	1.4	0.5	0.6	1.3
2013	1.4	2.1	0.9	0.5	0.6	1.1
2014	1.2	1.7	1.6	0.9	0.6	1.2

* Data obtained by MnDNR during PI Survey

Historical Lake Treatment Areas:

Green dots represent the amount of submersed plants throughout the lake. The larger the dot, the more plants, starting in 2006. Note decrease in plants in this time span.

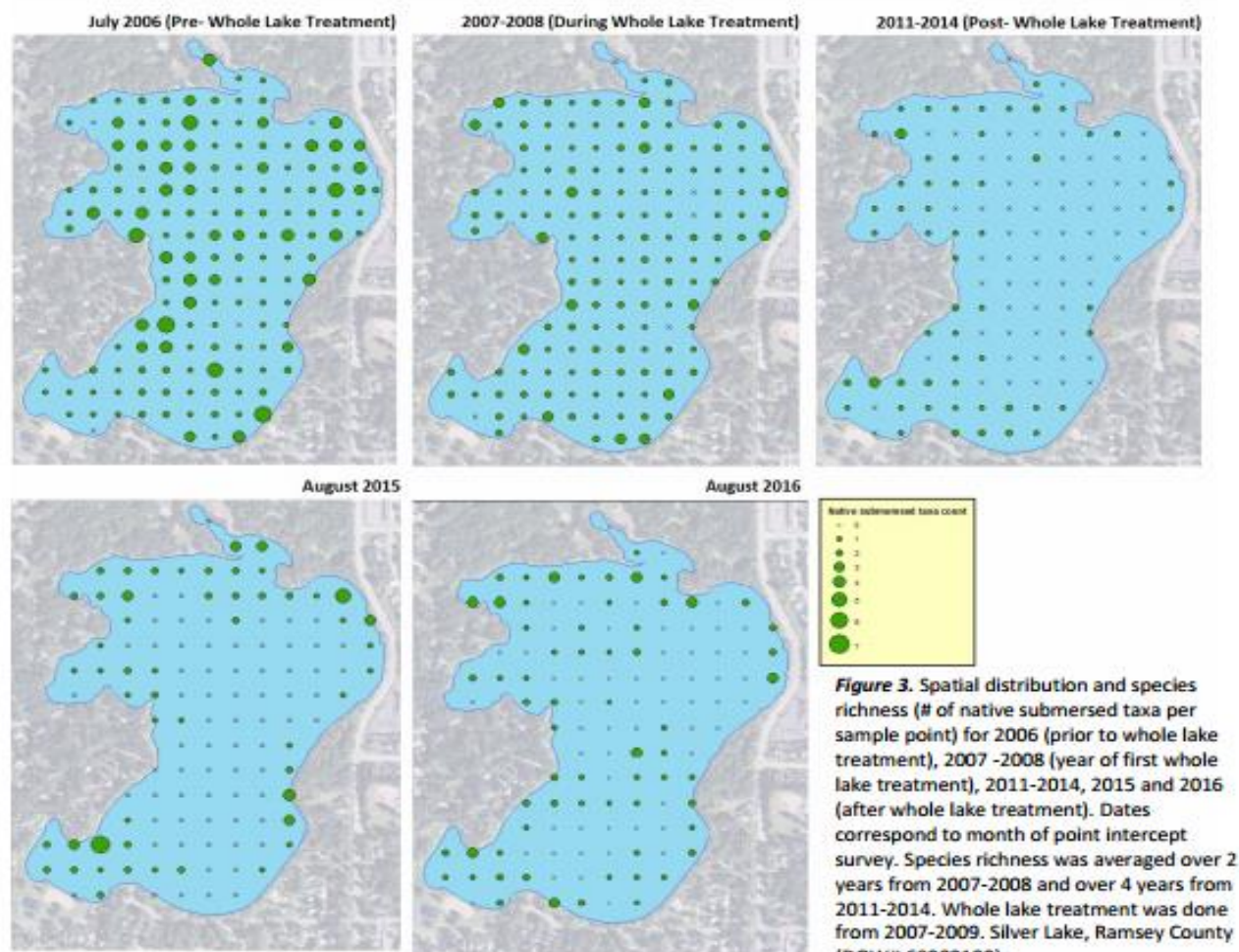
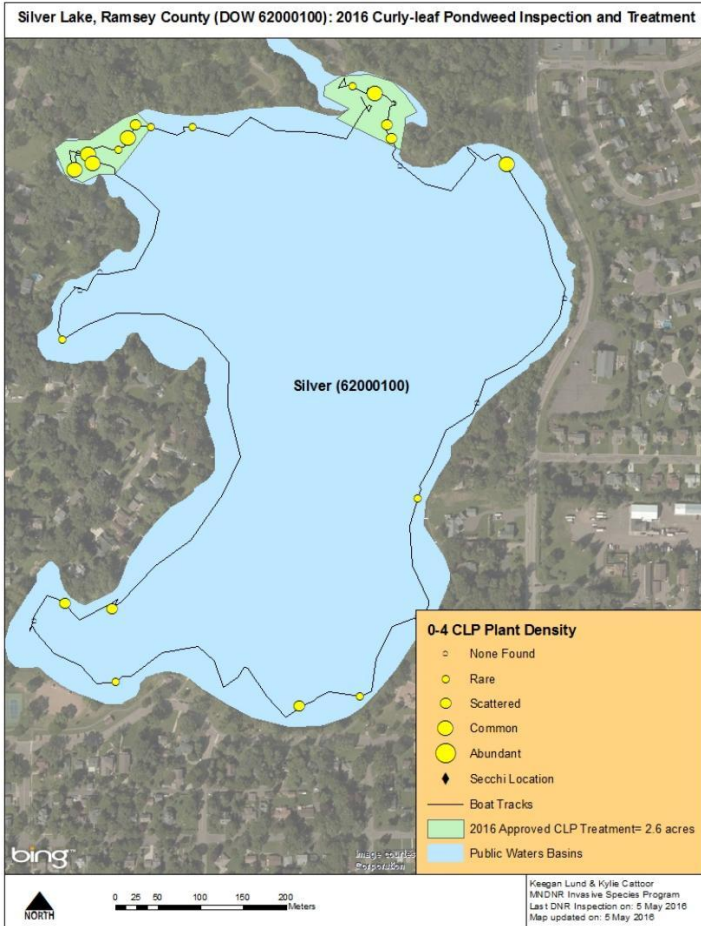


Figure 3. Spatial distribution and species richness (# of native submersed taxa per sample point) for 2006 (prior to whole lake treatment), 2007 -2008 (year of first whole lake treatment), 2011-2014, 2015 and 2016 (after whole lake treatment). Dates correspond to month of point intercept survey. Species richness was averaged over 2 years from 2007-2008 and over 4 years from 2011-2014. Whole lake treatment was done from 2007-2009. Silver Lake, Ramsey County (DOW# 62000100).

2016 Treatment:

- Inspected lake after ice out
- Found Curly-Leaf Pondweed
- Submitted proposal
- DNR inspected & approved
- Treated while the water was cool
- Treatment approved by DNR
- No treatment of Eurasian Milfoil
- Water temp too high when Milfoil was detected

Treated Areas:



High Water Levels: (Muller)

A Shoreline Damage Survey Conducted by John Muller this past Fall. John was to collect data as to amount of dollars of damage that has been as a result of high water on our shorelines. If you did not participate but would like to, please let John know.

This data is **necessary** as the Valley Branch Watershed District and the DNR will NOT help us assess how to manage our high water issue. **This is a substantial amount of losses for our homes.**

Impact on Homes:

Wet Basement/Crawlspace	Cost of Cleanup/Repair	Cost of Prevention
2 of 9 Surveys	\$32,000	\$40,000
5 of 9 Estimates	\$8,000	\$50,000
7 of 18 Total	\$40,000	\$90,000

Impact on Shoreline:

Number of Surveys	Damage to Shoreline	Projected Future Damage
9 Surveys	\$167,000	\$122,000
9 Estimates	\$275,000	\$128,000
18 Total	\$442,000	\$250,000

Weir: The weir is located at the northeast corner of our lake. It is 1 foot over the no-wake level. The water input to Silver Lake on the north WEST corner is faster than the output through the weir. Well, check out how large the area is on the NW corner vs the size of the weir hole.

The North West corner of Lake (North of Dorothy Park): this area is fed by Century College. The water flows significantly to Silver, so when it rains a lot, we get a lot. Thanks.

John has had meetings with the DNR and Valley Branch to see if they would help us regulate our input to output and maintain water levels. They insist on having data to prove our high level water does affect our shorelines and homes. This is why John conducted the survey and why the feedback is so important to us.

When the weir is blocked by twigs, weeds etc, it flows out very slow. Members of this board head out weekly to check the weir and clear it of debris.

2017 Planning and Beyond

Proposed plan for lake treatment in 2017:

- Goal:** Improve the health of the lake, continued
 - Increase native plants
 - Decrease invasive plants
 - Improve water quality (clarity and nutrients)

- Targeted treatment**
 - Perennial problem areas
 - Dependent on funding (see next bullet)

- Seek funding through city partners** – given our financial situation, funds to treat are greater than funds we bring in, i.e. membership. Last year the SLIA board reached out to our city partner of the lake, **Oakdale** which is on the east side bordering Century Ave (weir); **Maplewood** which is on the north shore line of the lake (Joy Park, Boat Launch, Fishing Pier, Park and spots to fish); and **North St Paul** shore line south of lake (Swimming beach, fishing pier, picnic pavilions, play park).
- Given the ownership of those essential shorelines of Silver Lake, we are reaching out to these Cities to ask if they would contribute their fair share to the treatment of invasive plants to help us curb our costs. They have stated to us that they will also wait for the survey results on lake water levels/damage the Valley Branch Watershed District and the DNR are seeking.

Members of the board will be engaging in this discuss at a future NSP City Council board meeting.

- Encourage lake level stabilization**

John Muller will provide the necessary data to the Valley Branch and DRN to hopefully engage them in helping us maintain the lake level stabilization. If anyone would like to work with John on this initiative please let him know! He'd love the additional assistance

2017 SLIA Membership

Membership Dues:

- Dues will remain at **\$25** per household (up to 2 voting members per household). **Joyce Germscheid** will email and also drop off the newsletter to lake shore home owners and neighbors, encouraging their membership support.
- Doing the math, with 26 members @ \$25 in 2016, that is a total of \$650 that goes toward the yearly weed treatments to the lake. **We encourage you to please help support the quality of Silver Lake by sending in the annual membership dues. Every bit helps. THANK YOU!!**

Kindly complete the following and remit your **\$25** 2017 dues (payable to SLIA) to:

**SLIA c/o Joyce Germscheid
2571 Poplar Ave E
North St. Paul, MN 55109**

1. MEMBER NAME: _____

2. MEMBER NAME: _____

ADDRESS: _____

EMAIL ADDRESS: _____

SECOND EMAIL ADDRESS(if applicable): _____

What else is important to you concerning the health of Silver Lake or how the SLIA can better serve the home owners and community?

Additional Comments:

Contact Us

If you would like to find out more about SLIA, **please contact us at www.silverlakensp.org.**

Anyone can join the lake association not just lakeshore homeowners; any member of the lake association is eligible to run for board.

Shoreline Best Practices:

Helpful Links:

<http://www.extension.umn.edu/environment/water/shoreland/better-living-on-our-lakes-and-rivers/best-management-practices/>