

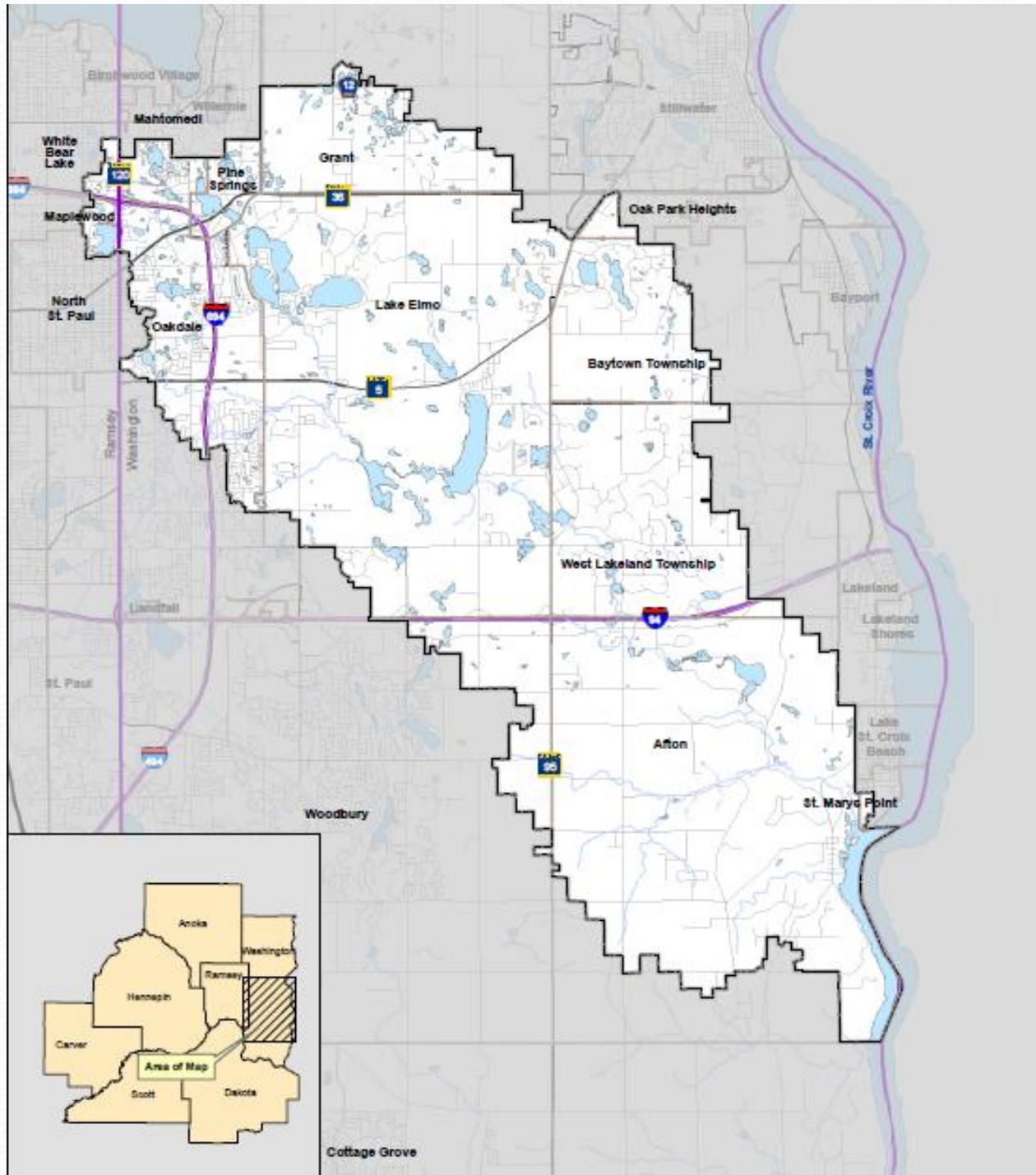
# VALLEY BRANCH WATERSHED DISTRICT

PRESENTATION TO:

CITY OF North Saint Paul

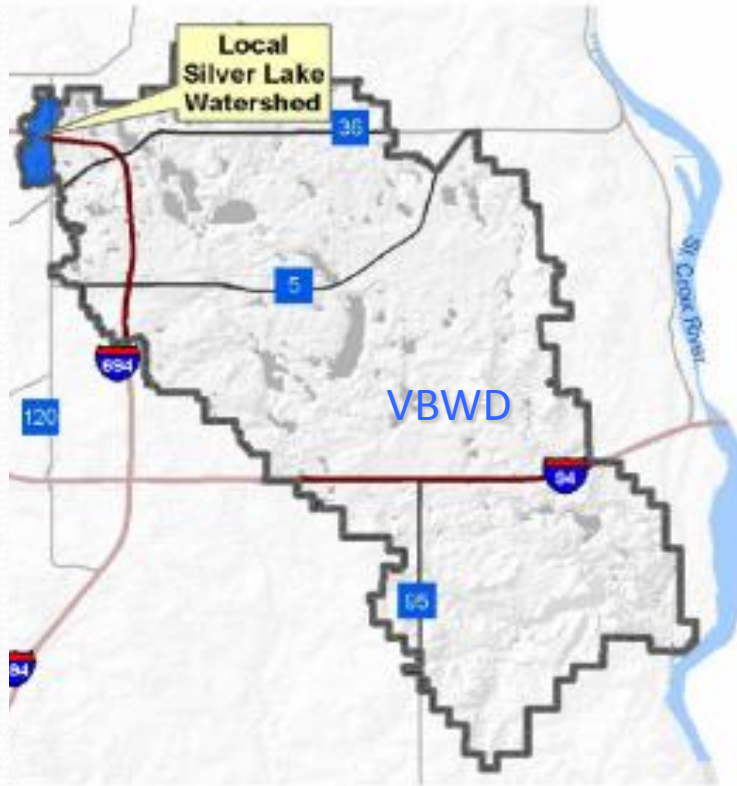
February 4, 2013

By Lincoln Fetcher, VBWD Vice President



# Silver Lake (East) Watershed

436 acres  
(317 excluding  
landlocked areas  
and lake surface)



# VBWD Constituent Communities

- City of Afton
- Baytown Township
- City of Grant
- City of Lake Elmo
- City of Mahtomedi
- City of Maplewood
- City of North St. Paul
- City of Oak Park Heights
- City of Oakdale
- City of St. Mary's Point
- West Lakeland Township
- City of White Bear Lake
- City of Woodbury

## **VBWD Vision:**

- Always be careful stewards of the water resources within our watershed boundaries

# VBWD Mission:

- To manage and protect our water resources: lakes, ponds, creeks, streams, wetlands, drainages, and groundwater by:

# VBWD Mission - continued:

- Promoting open communication with our constituents
- Improving and protecting the quality of water for all water bodies within the VBWD
- Managing the quantity of water and minimizing impact of floods, high flows, and droughts
- Understanding the effects of community growth and other activities on groundwater
- Continuing to enforce the Wetland Conservation Act as the Local Unit of Government
- Educating our constituents and the governmental units within the VBWD on all these issues

# Minnesota Law Gives Watershed Districts the Authority to:

- Adopt rules
- Prepare plans
- Levy taxes
- Acquire property
- Acquire, construct, and operate water management features
- Enter land





# The VBWD requires permits for certain activities

- 1) Land alterations, such as grading or filling, which remove or cover surface vegetation of 1 acre or more



# Activities triggering a VBWD permit continued....

- 2) All projects which create a new impervious surface area of 6,000 square feet or more



# Activities triggering a VBWD permit

## continued....

- 3) All work within the waters and floodplain of the District
- 4) All projects which result in a discharge of municipal or industrial water or wastewater to a surface water drainage system
- 5) All subdivisions, plats, and developments
- 6) All projects which result in lake augmentation
- 7) All projects which result in a wetland impact

VBWD has its own wetland and stormwater rules and administers the Wetland Conservation Act.



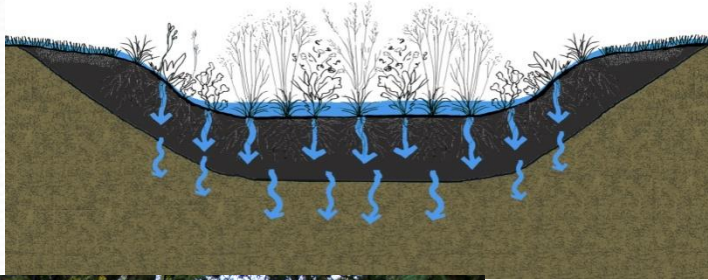
# The VBWD reviews permits for conformance to rules.

## Standards include:

- Stormwater runoff rate and volume control
- Stormwater runoff quality treatment
- Flood level determination and minimum floor elevations 2 feet above
- Numerous wetland standards
- Erosion and sedimentation control plan

## In addition to permitting:

VBWD offers a Cost-Share program for implementation of water quality improvement projects like Raingardens, Shorline stabilization and restoration, Pervious Pavement – for Individuals, Communities, and Developers.



# VBWD Activities affecting North Saint Paul and Silver Lake:

- Watershed Restoration and Protection Program (WRPP) on several lakes including Silver
- BMP Cost Share for Individuals, Communities, and Developers
  - N. St. Paul Surface Water Utility reduction for those installing BMPs! Nice going!
- Silver Lake Water Quality

# WRPP (pronounced “WRAP”)

- 11 Waterbodies, including Silver Lake
- Comprehensively and methodically study all aspects of the waterbody and it's watershed
- Impairment diagnosis (cause(s) of degradation)
- Restoration and Protection modeling and plan
- Report on work, findings, and plan
- Timeline: 3 Years - Sept. 2012 through June 2015
- Barr Engineering, MPCA, VBWD (MPCA is funding source)
- Includes stakeholder participation meetings
  - First w/ Tech Advisory Committee to discuss data available
  - For input from Public – before mid-year.

# BMP Cost Share for Individuals, Communities, & Developers

- Installation of a Stormwater Best Management Practice to reduce pollutants from entering a waterbody
- For Individuals: up to \$5,000 reimbursement per pound of phosphorus removal.
- Plant Grants: Up to \$500 for plants used for water quality improvement projects.
- Community Grants: Cost share support for Communities and Municipalities
- Buckthorn Removal: Cost share up to \$1,000 per acre of removal (within 500' of drainage to protected DNR waterbody)
- Several residents in the Silver Lake watershed have installed BMP projects, annually removing an estimated pounds of:

6.783 # Total Phosphorus
13.4232 # Total Nitrogen
439.9906 # Total Suspended Solids

<b>Kotz &amp; McComb Shoreline Restoration (2013)</b>
2.14Lbs per year Total Phosphorus
2.41Lbs per year Total Suspended Solids



# Recent Silver Lake Issues:

- Water Quality
  - Degrading since 2006 after first lakewide vegetation treatment.
  - Native vegetation was killed during the treatment
  - Decreased clarity makes it harder for native plants to grow.
  - Return of Curley Leaf Pondweed and Eurasian Water Milfoil

# Recent Silver Lake Issues - continued:

- Shoreline:
  - Significant erosion where no native vegetation grows
  - Large areas of shoreline eroding (especially on East shore) – but less after the following:
    - East shoreline restored by shared effort initiated by VBWD in 2000. with North Saint Paul and Ramsey County.
    - N. St. Paul and Maplewood stopped mowing to water's edge in 2010 and south shoreline improved significantly.
    - Maplewood did restoration on shoreline in Joy Park
  - NEED to develop shoreline vegetation and access plan – something similar to what's around Lake Phalen
  - City needs to take on vegetation maintenance of these restored areas.
  - Homeowners can make a BIG impact by implementing BMP projects.

# What can SLIA do??

- Be a LEADER – Initiate actions and bring stakeholder to the table
- Participate as stakeholders in the WRPP effort.
- Press North St. Paul to do their part
  - Shoreline restoration on South Side
  - Develop and implement a vegetation maintenance plan (for Bioretention Basin, East shoreline & South shore)
  - Work with VBWD to press the city fix the Bioretention Basin problems (VBWD has offered to help)
- Lead a cooperative effort for ordinances to limit boat speeds
- Get members to install BMPs (& apply for cost share money from VBWD)
- CONTINUE good work of Silver Lake Splash and Shoreline Cleanup
- Follow Como Park in organizing Leaf Pickup events  
(5 bags of leaves = 1 pound of phosphorus = 1,000 pounds of algae)  
**[www.capitolregionwd.org/residents.html](http://www.capitolregionwd.org/residents.html)**

QUESTIONS??

IDEAS?

COMMENTS?

- VBWD Web Site: [www.vbwd.org](http://www.vbwd.org)
- Contacts:
  - John Hanson, Barr Engineering
    - [jhanson@barr.com](mailto:jhanson@barr.com)
  - Lincoln Fetcher, VB VBWD
    - [lfetcher@isd.net](mailto:lfetcher@isd.net)

THANK YOU FOR YOUR TIME!